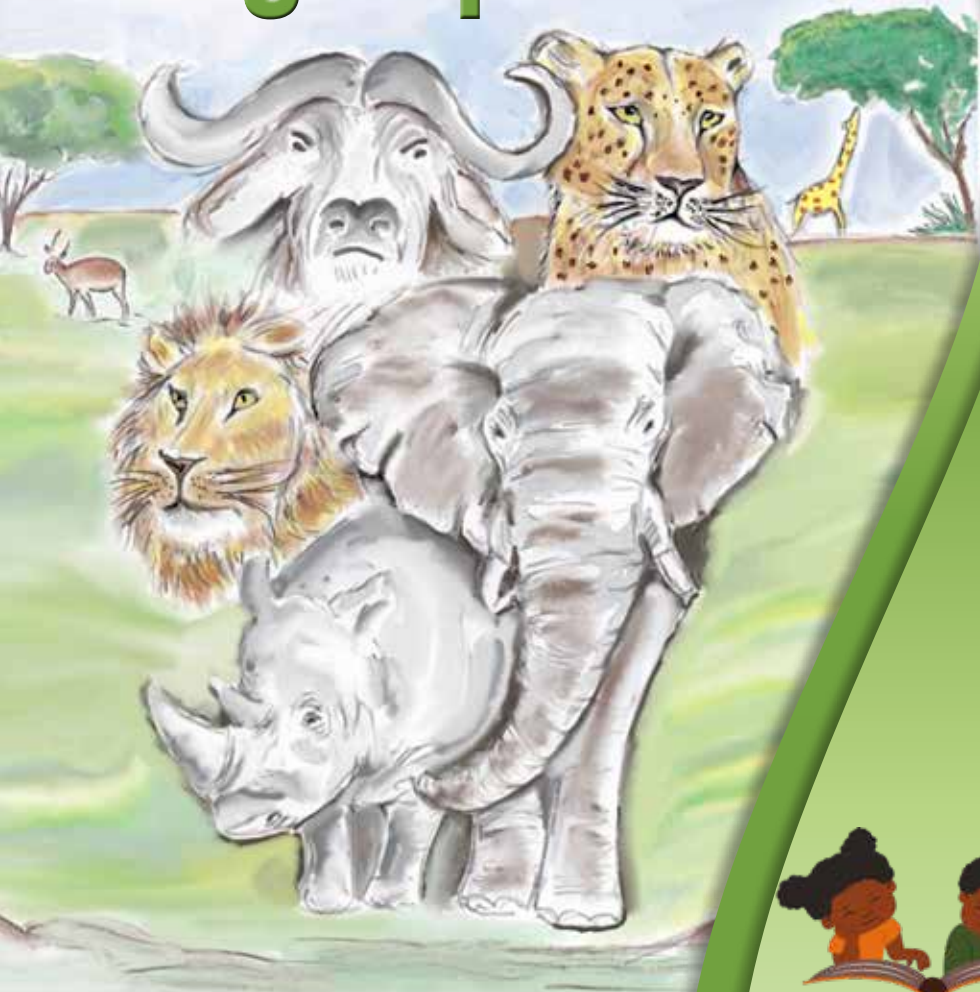


Tshivenda

Luṭa

4c

Lwendo lwa u ya vhugalaphukha



Zandile Malaza



Ulwazi
Lwethu

Mibvumo (tsedzuluso)

dz, vh, kh, fh, zw, mb, ng, nd, tsh, th, sh, nd, th, ny, ph, sw, bv, lw, pfh, n̄w, ts

Maipfi a u vhalwa nga ndowedzo (maswa)

Kruger National Park

Mpumalanga

Limpopo

didinngwe

phunguhwe

Lwendo lwa u ya vhugalaphukha

Tshiveng̃a

Luj̃a 4C

ISBN: 978-1-77981-042-7

© 2023 Ulwazi Lwethu African Languages Literacy Project

Muñwali: Zandile Malaza

Mutshanduli: Mpho Makwarela

Mufanyisi: Carin Maehr

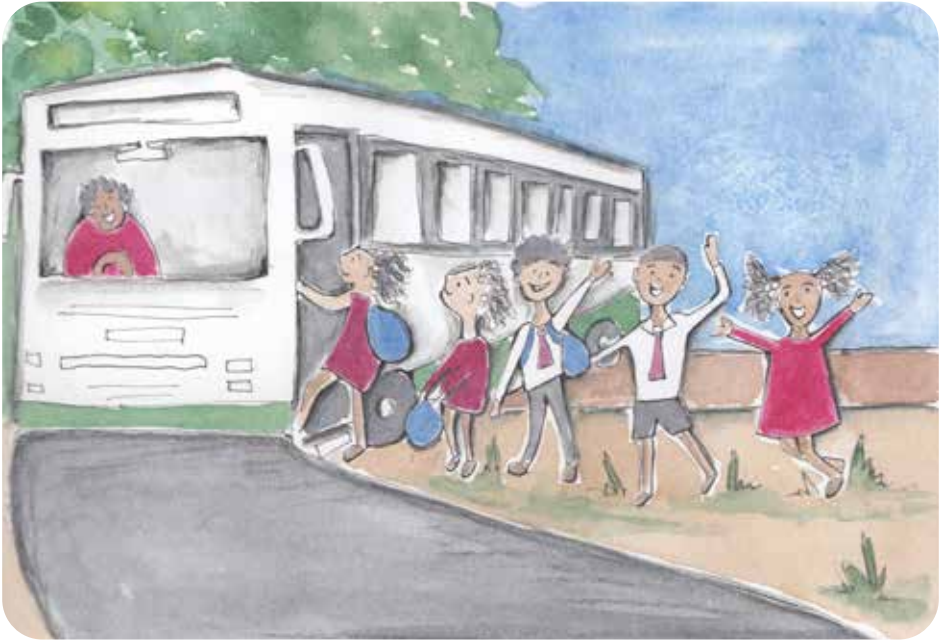
Nyolo na kududzanyele: Rock Bottom Graphic & Design

Nzunzanyo ya khangiso ya u thoma 2023.

Lwendo lwa u ya vhugalaphukha



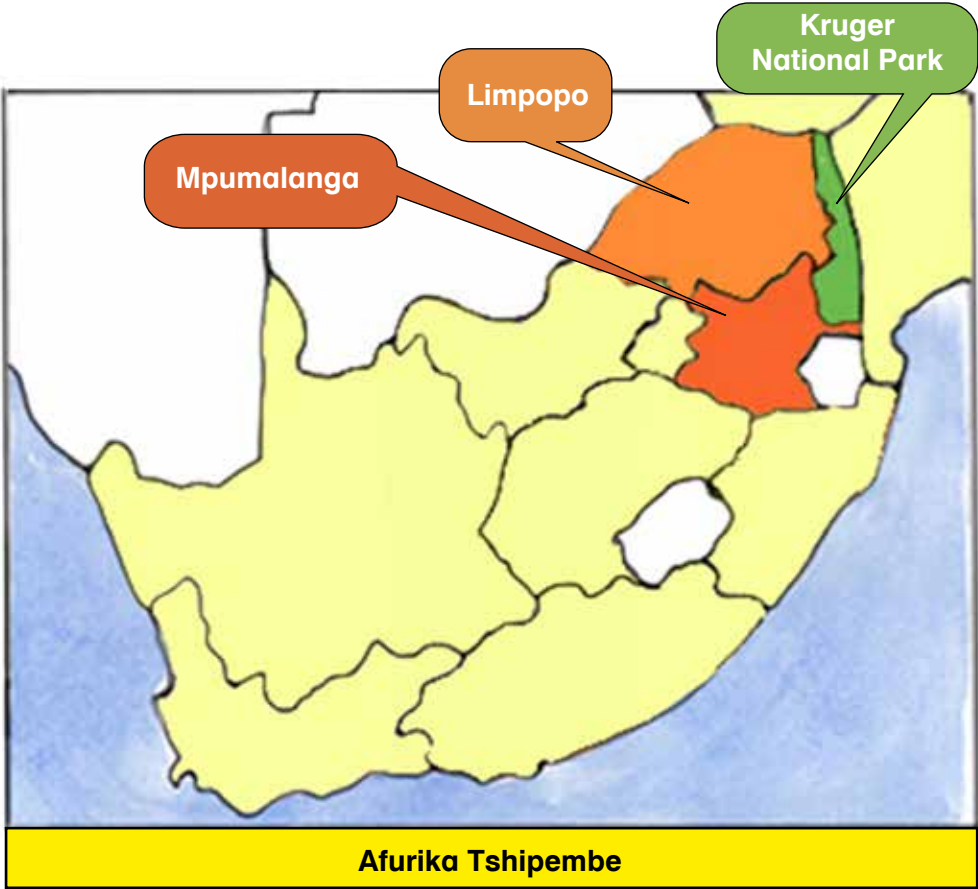
Zandile Malaza



Ndi mafheloni a vhege nahone kilasi yashu i khou dalela Kruger National Park. Vhuñwe ha vhugalaphukha vhuhulwane kha shango.

Arali na sedza kha mapa, ni do vhona uri vhu tanganyisa Mpumalanga na Limpopo.

Ro takalesa!



Nga matsheloni, ra ṭangana na ane a ɔo ri tshimbidza, ane a vha mutandudzi.

“Ndi matsheloni, vhana! Ndi pfhi Wama,” u ralo. “Iyi phakha ndi fhethu ho fhumulaho, nga zwenezwo ri ambele fhasi.”



Ra tshimbila phakhani.

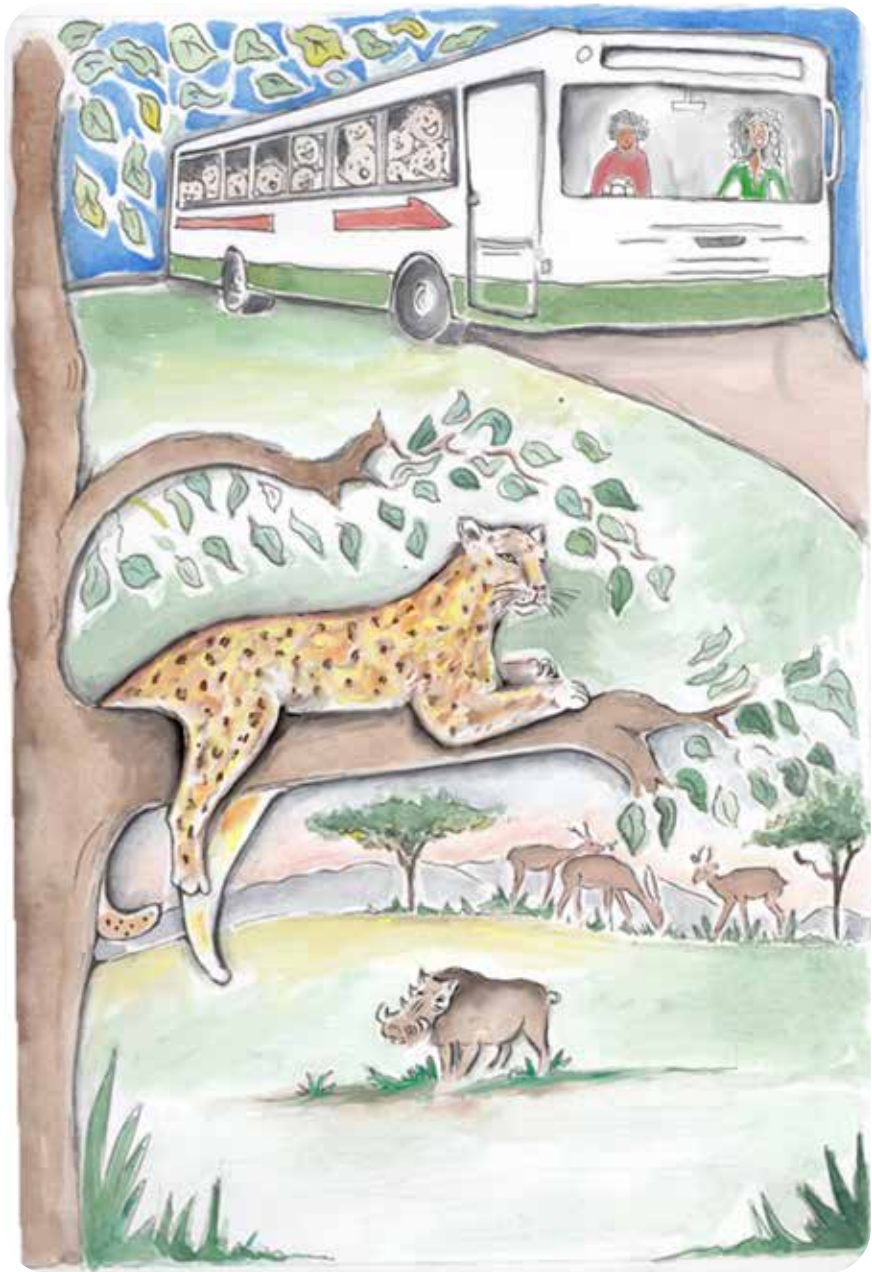
Hu si kale Wama a imisa basi. A sedza nga tshivhonakule tshawe. O takalesa!

“Ni khou vhona tshipuka tshi re na vhukuse ha zwithoma, tshi re kha tshelede yashu ya R200?” u ralo, u vhudzisa o sumba muri muhulwane.

Eya! Khetshila! Ri khou vhona didinngwe kha davhi la muri. Ri na mashudu!

Ni thogomele, nguluvhedaka! Ni thogomele, phala! Hu na didinngwe li re na ndala nga thungo!





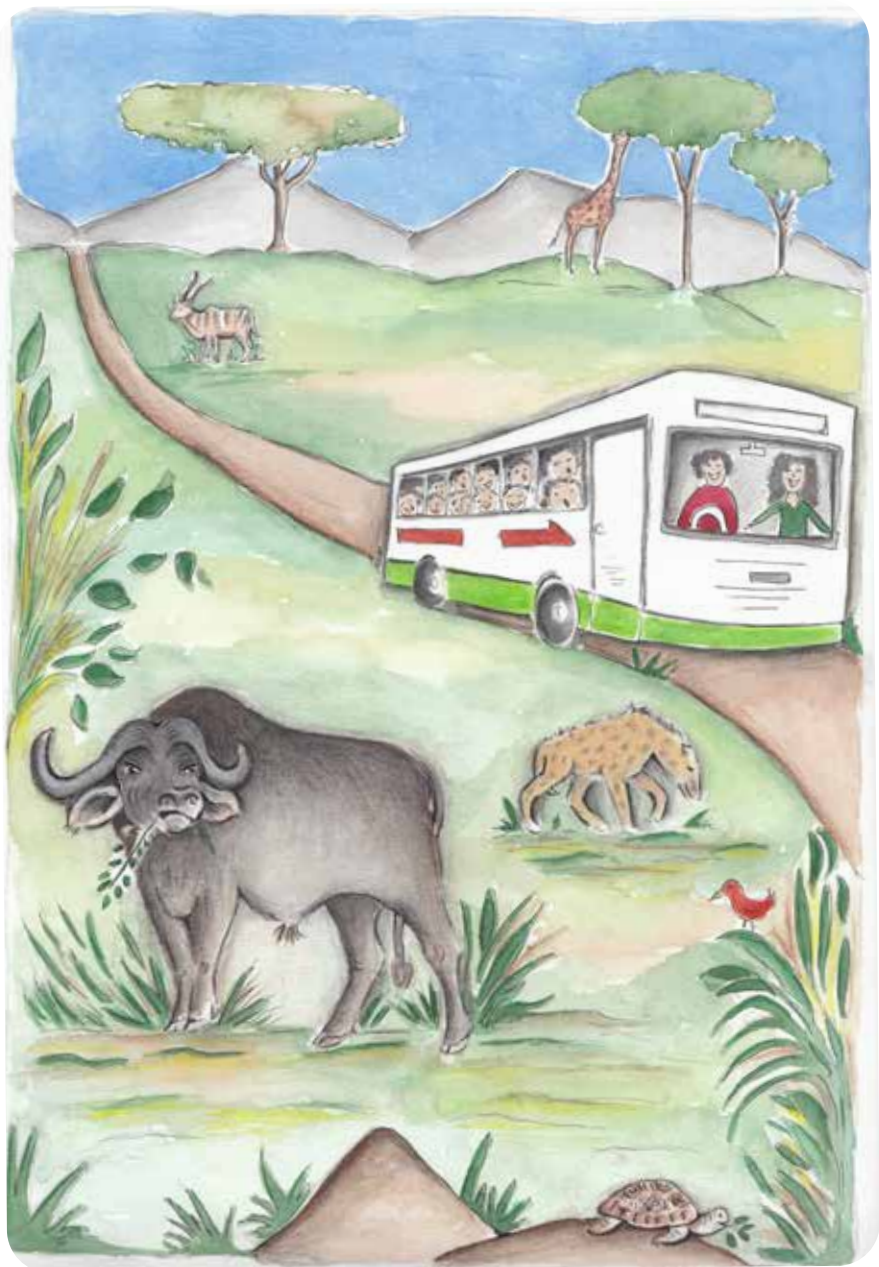
Hu si kale Wama a imisa hafhu basi.

A ri, “Ni khou vhona tshipuka tshi re na mananga, tshi re kha tshelede yashu ya R100?”

Eya! Khetshila! Ri khou vhona nari mahatsini.

Ni thogomele phele! Hu na nari ine yo dinaleaho nga thungo!





Ra bvela phanda na u tshimbila phakhani.

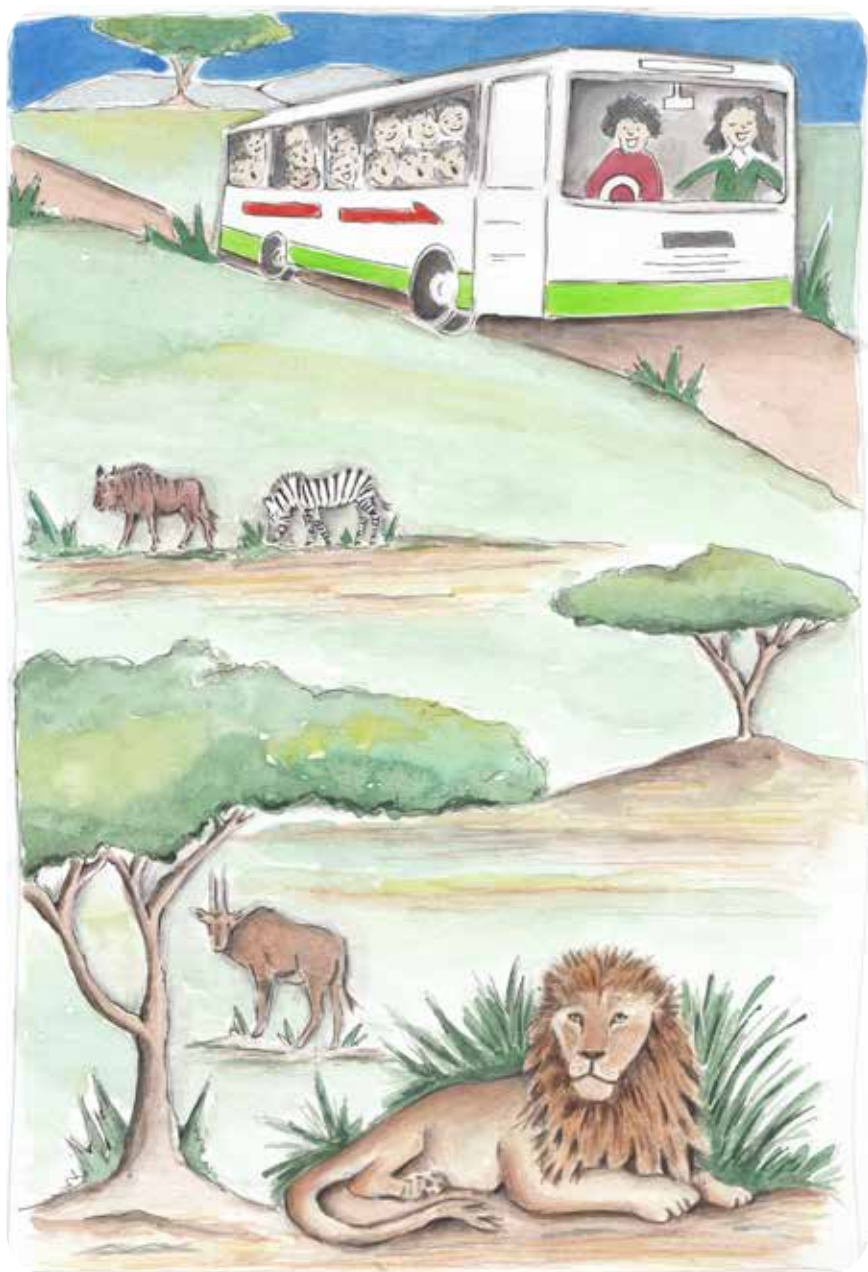
Wama a imisa basi. U dovha a pfha o takalesa!

A ri, “Ni khou vhona tshipuka tshi re kha tshelede yashu ya R50?”

Eya! Khetshila! Ri khou vhona ndau fhasi ha muri. Ri na mashudu vhukuma!

*Ni thogomele, mbiqi! Ni thogomele, khongoni!
Heila ndau i na maṅo na ṅala zwa vhuhali!*





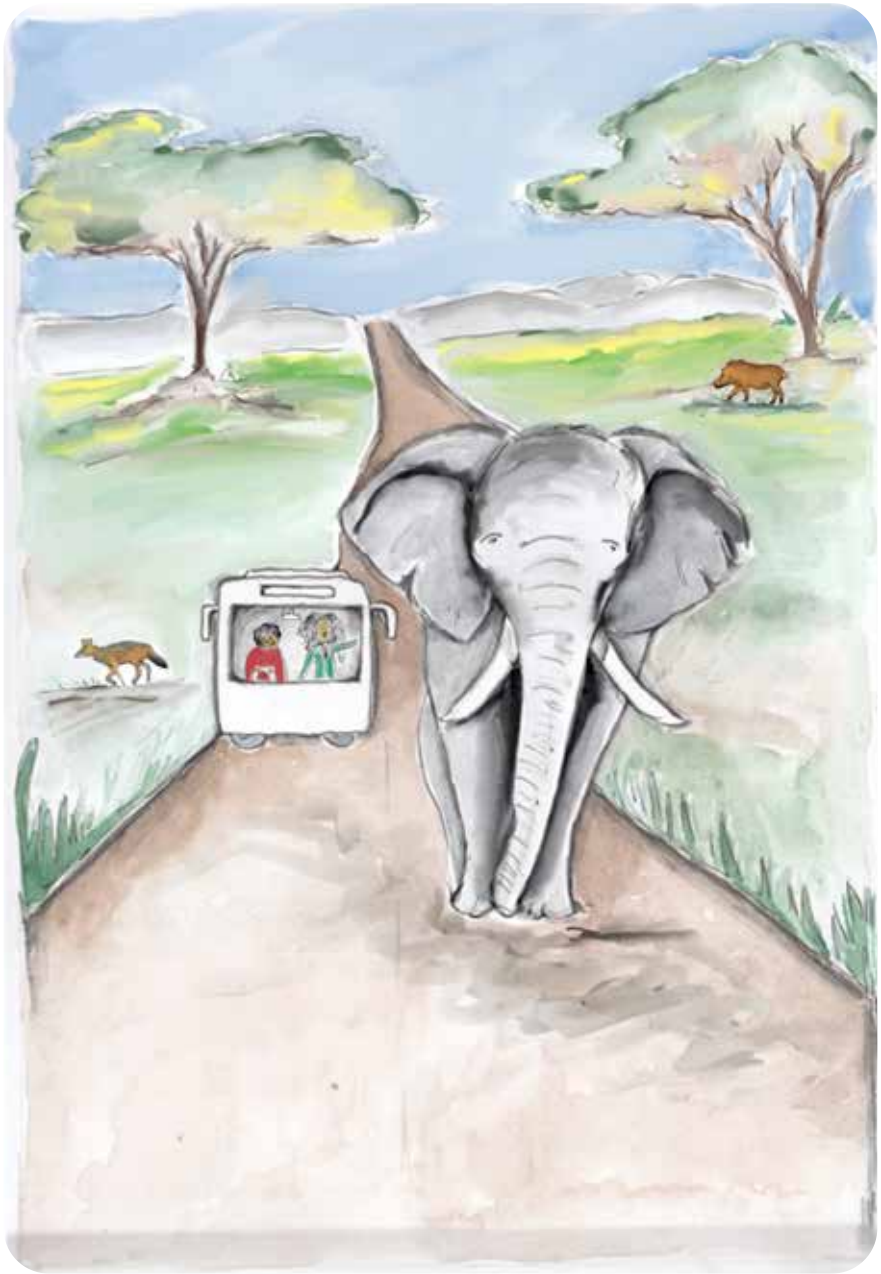
Ra bvela phanḁa na u tshimbila phakhani.

Zwino roṭhe ra vhona ndou ya muvhala wa girei phanḁa hashu!

Wama a ri, “Heyi phukha i re na musingo i kha tshelede yashu ya R20!”

Ni ṭhogomele, phunguhwe! Hayo maṅo ndi malapfhu nahone a na vhuhali!





Ra bvela phanḡa phakhani.

Wama a imisa mureili wa basi. O takalesa!

A ri, “Ni khou vhona tshipuka tsho khetheaho tshi re kha tshelede yashu ya R10?”

Eya! Ri khou vhona tshugulu mbili dzine dza khou tshimbila mahatsini.

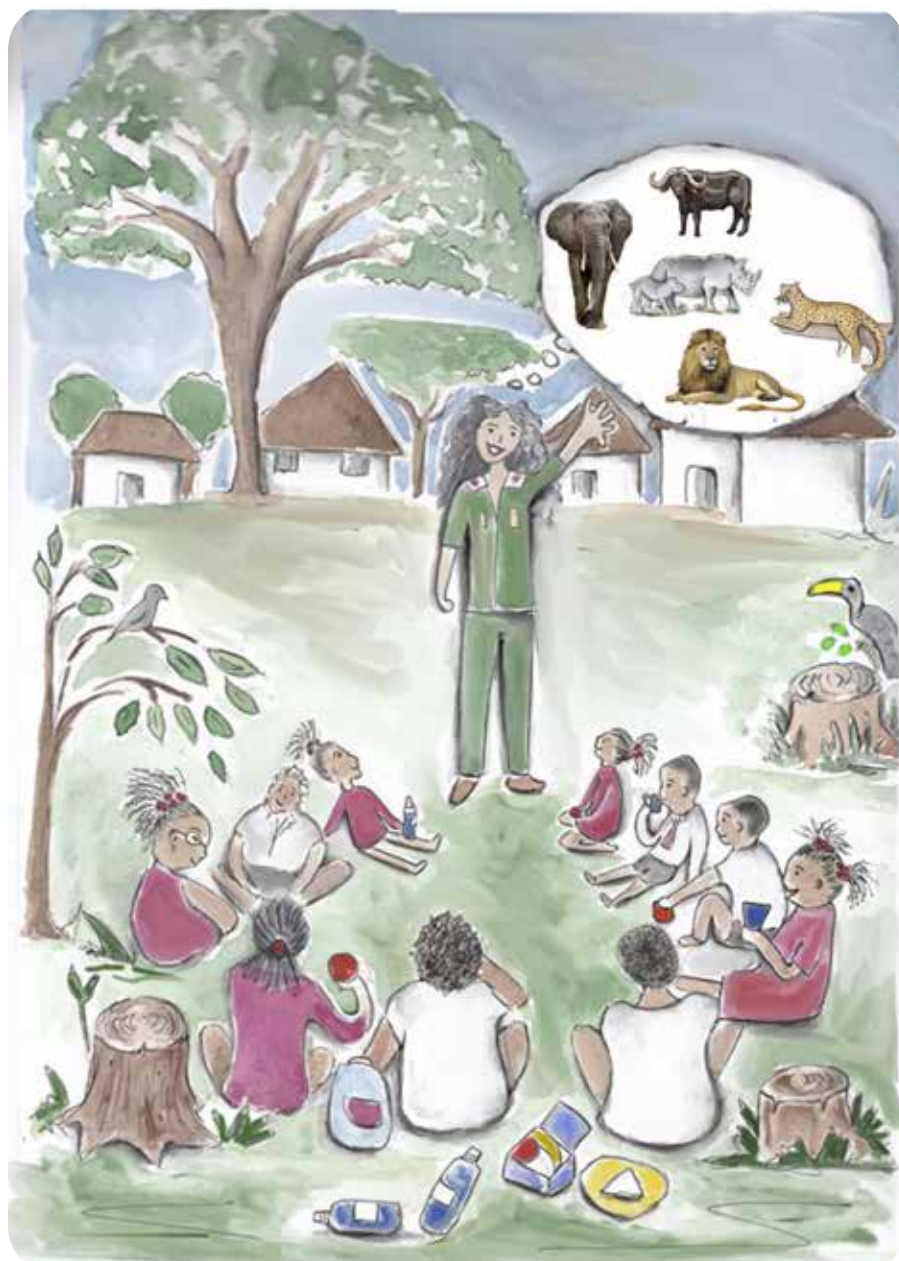
Wama a ri vhudza uri tshugulu dzi khomboni. Zwi vhavhaho ndi uri hu ḡodiwa maḡanga adzo. Ri na mashudu u dzi vhona!





Wama a hambela mureili wa basi uri a ime fhethu ha pikiniki uri ri le zwiliwa zwashu zwa tshiswitulo.

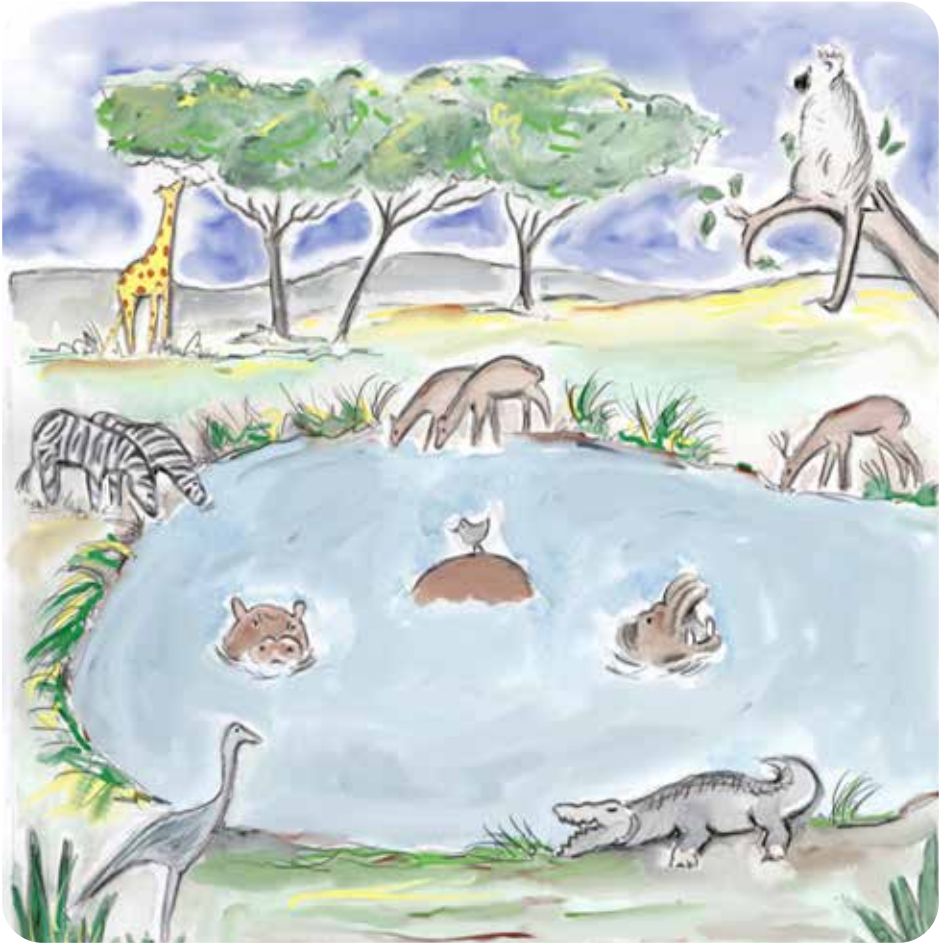
Wama a ri, “Ro vhona khulwane thanu! Kale idzi phukha dzo vha dzi tshi vhidziwa ‘khulwane thanu’ ngauri dzo vha dzi phukha thanu dza khombo dzine dza zwimiwa.”



Musi ri tshi fhedza u la zwiliwa zwa tshiswiulo
ra vhuyelela basini la u ya hayani.

Ro lindela u vhona phukha dziinwe musiri tshi
humela murahu!





Vhugalaphukha ndi huŋwe fhethu hu
akhamadzaho!



Ulwazi Lwethu

Readers

Luĵa 1-2

- Donngi ya Khuliso
- Nunu na Bobi
- Lĵowa!
- Muma, aĵama, pfhala!
- Zwivhuya u funa u kunakisa!
- Ngele na Ngudo vha a thusa
- A hu na maĵi
- Tshi a kona u fhufha?
- Mulilo!
- Mavhudzi mahulu
- Tĵali na buvhi
- Muoli Marubini!
- Thuso o mangala!
- Baba vha ĵo vhuya lini?
- Phumu o takalaho!
- Mvulatshikolela!
- Thendo na Thiambi
- Kha ri vhlunge maĵi
- Tĵhama o farakanea!
- Vha bulasini
- Ivhani na vhlenda, Thabelo
- Swobo ya u ĵifhelela
- Vhasidzana na mbudzi

Luĵa 3

- Badzhi yo shandukisiwaho
- Dzikhonani kha miĵho yoĵhe!
- A thi funi miroho!
- Mulimi Vho Vele na dzĵihoho
- Tshilidzi o huvhala
- Maĵi! Maĵi!
- Lufuno lwa malwelavavĵa
- Zwienda zwiswa zwa Pfhano
- Mathaitai a Lwalwa
- Riphuluse o fara mbava!
- Muĵa u tĵhogomelaho
- Musengavhadzimu wa Farisani
- Mutevheĵhaĵu wa vhutshilo ha tshiĵula
- Vhulwadze ha dzinguluvhe
- U tĵetshela zwĵiĵiwa zwa Tshivavĵa
- Makumba o nyamalalaho a Vuvu
- Lutamo lwa Nwasundani lwo bveledzea
- Aĵivhaho na Aĵaho
- Moli na zwithuthubi
- Tshibeĵani tsha Kulani
- Maitele a Vhavavĵa
- Mukapu wa u ĵifha
- Mushonga wa u fhodza
- Nĵotshi
- Vhuĵolo ha dzimbeu
- Muhumbulo wavhuĵi wa Tseisano
- Bola yo xelaho
- Wanga u ĵivha tshifhinga
- Ni tĵavhanyela mini, Wandeme?
- Ngweĵa i sa londi
- Mutambi makone
- Zwifhiwa

Luĵa 4-5

- Rinngi ya musuku
- Lwendo lwa u ya vhugalaphukha
- Muvhuya u londola mutakalo zwavhuĵi!
- Mulimisi o fariwa nga mala
- Soweto
- Tshaka dza zwiendedzi
- Mathoma maswa
- Ndifhedzo ya bulu
- Musidzana wa vhuĵali
- Zwo hulesa kha nĵe!
- Vhatukana vha vhuĵali
- Vhulwadze ha mukhushwane
- Murei wa khovhe
- Thaidzo ngadeni ya makhulu
- Vhusiku vhu si na khofhe
- Tĵhangaĵhanganyo tshi sa ofhiho!
- Tshienda tshavhuĵi
- Muĵoro wa Sedzani

ZENEX
FOUNDATION

MOLTENO
INSTITUTE FOR LANGUAGE AND LITERACY
EST. 1974



Ulwazi Lwethu yo lamedziwa nga Zenex Foundation nahone ndi thandela yo thomiwaho u itela u bveledza tshivhalo tsha bugu dza murole wa fhasi na vhavhali vha vhalelaho u dhiphina vha nyambo dza Afrika na matheriala wa u tikedza vhadededzi. Iyi thandela yo livhiswa kha u funza na u tikedza vhagudiswa vha re kha Mutheo wa Fhasi u itela u khwinifhadza kuvhalele na kupfhesesele kwa luambo lwavho lwa hayani. Bugu dzo bveledzwa nga nyambo dza tshane dza Afrika nga u shumisana ha Molteno Institute for Language and Literacies, Nelson Mandela Institute for Education and Rural Development, Room to Read South Africa, na Saide. Zwishumiswa zwothe zwo bveledzwa sa “Zwishumiswa zwa Pfunzo zwo Vulelwaho” kana “Open Education Resources” (OER).

Please visit our website to download the full copy of this reader:
ulwazilwethu.org.za



Creative Commons Attribution-NonCommercial-NoDerivatives (CC BY-NC-ND) 4.0 International Licence

Disclaimer: You are free to download and share this work as long as you attribute Zenex Foundation, but you may not change this work in any way or use it commercially.

