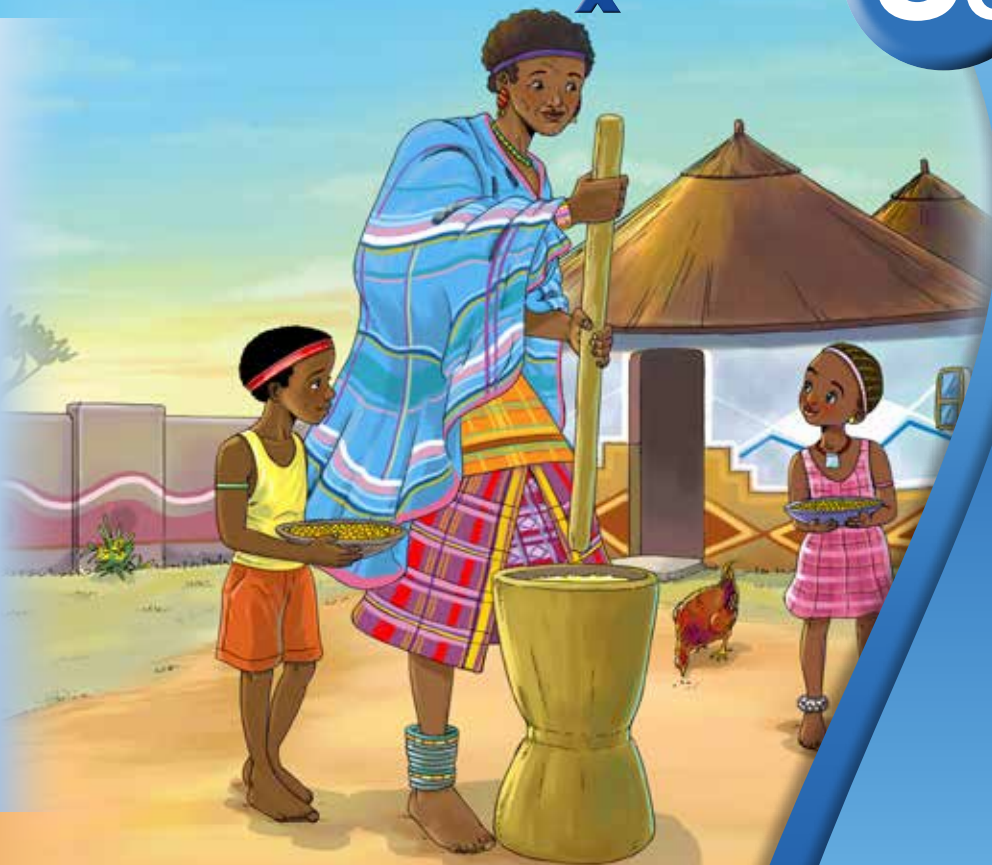


Maitele a Vhavenḡa

Tshivenḡa

Luḡa

3c



Mpho Witness Makwarela



Mibvumo (tsedzuluso)

dz, fh, kh, vh, mb, nd, ng, zw, tsh, ṅḁ, ph, sh, th, ṭh, bv, lw, nn, pfh, sw

Mubvumo muswa

ṅw (Muruṅwa, miṅwaha, iṅwe, liṅwe, miṅwenda, muṅwe)

Ipfhi ja u vhalwa nga ṅdowedzo (tsedzuluso)

mma

Maipfhi a u vhalwa nga ṅdowedzo

ṅḁe

mikhwa

nwa

gwadama

Maitele a Vhavaṅḁa

Tshivavaṅḁa

Luḁa 3C

ISBN: 978-1-77981-242-1

© 2023 Ulwazi Lwethu African Languages Literacy Project

Muṅwali: Mpho Witness Makwarela

Mufanyisi: Luyanda Cwane

Nyolo na kudzudzanyele: Rock Bottom Graphic & Design

Nzunzanyo ya khaṅḁiso ya u thoma ya 2023

Maitele a Vhavenḁa



Mpho Witness Makwarela

Ndi n̄e Muruṅwa. Ndi musidzana wa miṅwaha ya malo.

Ndi n̄e Mashudu. Ndi mutukana wa miṅwaha ya ṭahe.



Ri khou ya u ni vhudza nga ha maitete o fhambanaho a vhatukana na vhasidzana vha Vhavenḡa.

Nḡe ndi musidzana. Musi ndi tshi lumelisa ndi ri “Aa!”.

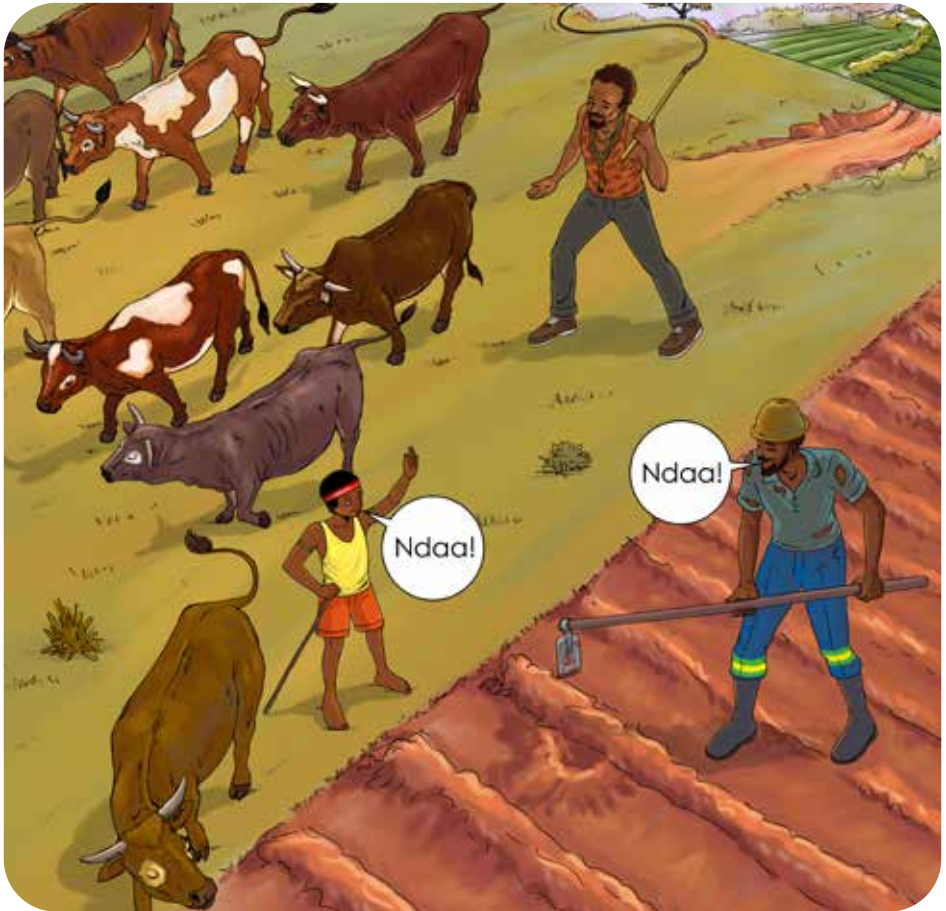
Ndi tshi aravha ndi ri “Aa!”.



Iyi ndi inwe nḡila ya u sumbedza ḡthonifho na mikhwa.

Nxe ndi mutukana. Musi ndi tshi lumelisa ndi ri “Ndaa!”.

Ndi tshi aravha ndi ri “Ndaa!”.



Ndi zwi itela u sumbedza thonifho, sa zwe Muruŋwa a amba.

Ri tshi lumelisa kana u nea vhaaluwa zwiliwa kana zwa u nwa, ri a sumbedza thonifho.



Vhasidzana vha losha nga lurumbu.
Vhatukana vha gwadama nga gona lithihi.
Izwi zwi sumbedza mikhwa yavhuḽi.

Uyu ndi mukomana wanga. U khou bva khombani.

Mma vha ri ndi hune vhasidzana vha gudiswa hone uri mufumakadzi u difarisa hani mutani wawe musi o no malwa. Vha dovha vha gudiswa nga ha uri hu bikiswa hani.



Na nne ndi do ya ndi tshi aluwa.

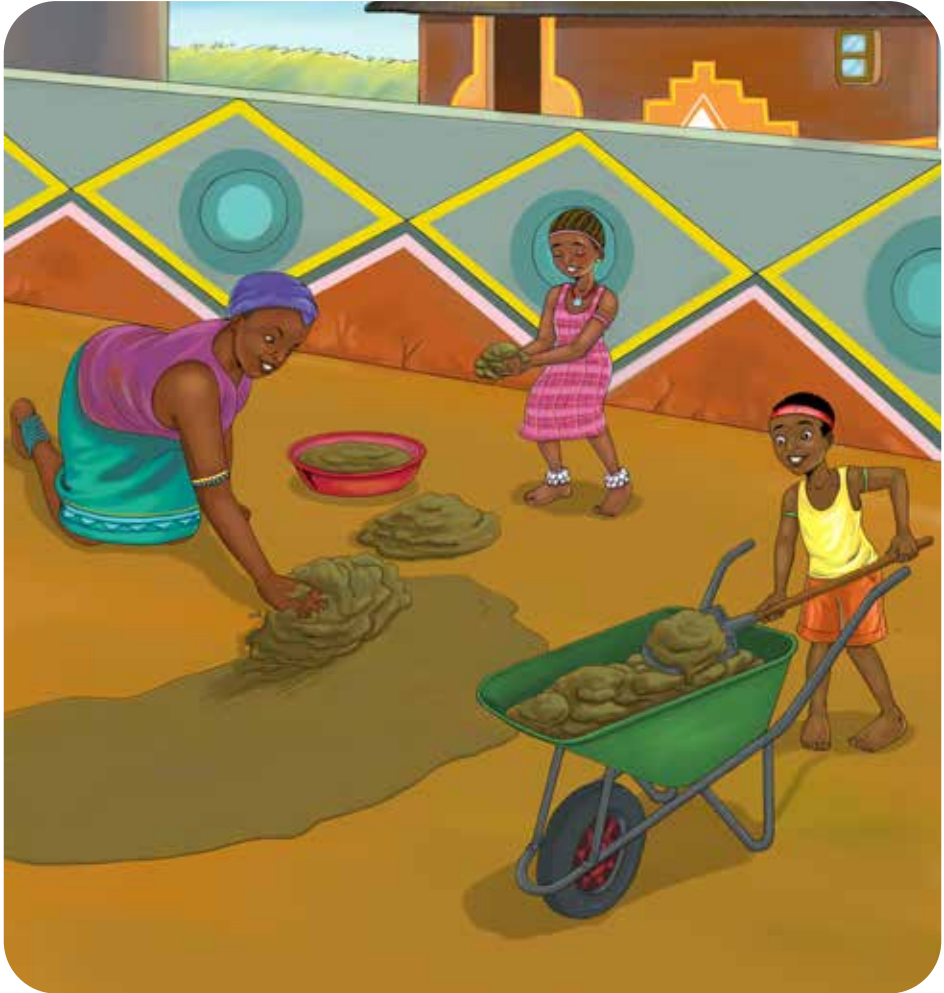
Uyu ndi mukomana wanga. U khou bva muḷani.



Baba vha ri ndi hune ha gudiswa hone u vha munna na u ḥogomela muḥa wawe nga ḷiḥwe ḷa maḍuvha.

Na nḅe ndi ḍo ya ndi tshi aluwa.

Vhavenda rothe ri divhelwa u shula miṭa na maguvha ashu nga matoko. Miṭa yashu ya sala yo nakelela.



Ri takalela u thusa!

Vhatukana ri tshina tshikona. Ri tshi tshina mabephani kana ri tshi khou qitakadza.



Ndi mutukana mutukusa, fhedzi ndi a kona u tshina mutshino wa tshikona zwavhudisa!

Uyu u dovha wa vha mutshino u takadzaho!

Vhasidzana ri tshina domba. Ri li tshina musanda musi hu na mushumo.



Ndi musidzana mutukusa, fhedzi ndi a kona u tshina mutshino wa domba zwavhudisa!

Uyu u dovha wa vha mutshino u takadzaho!

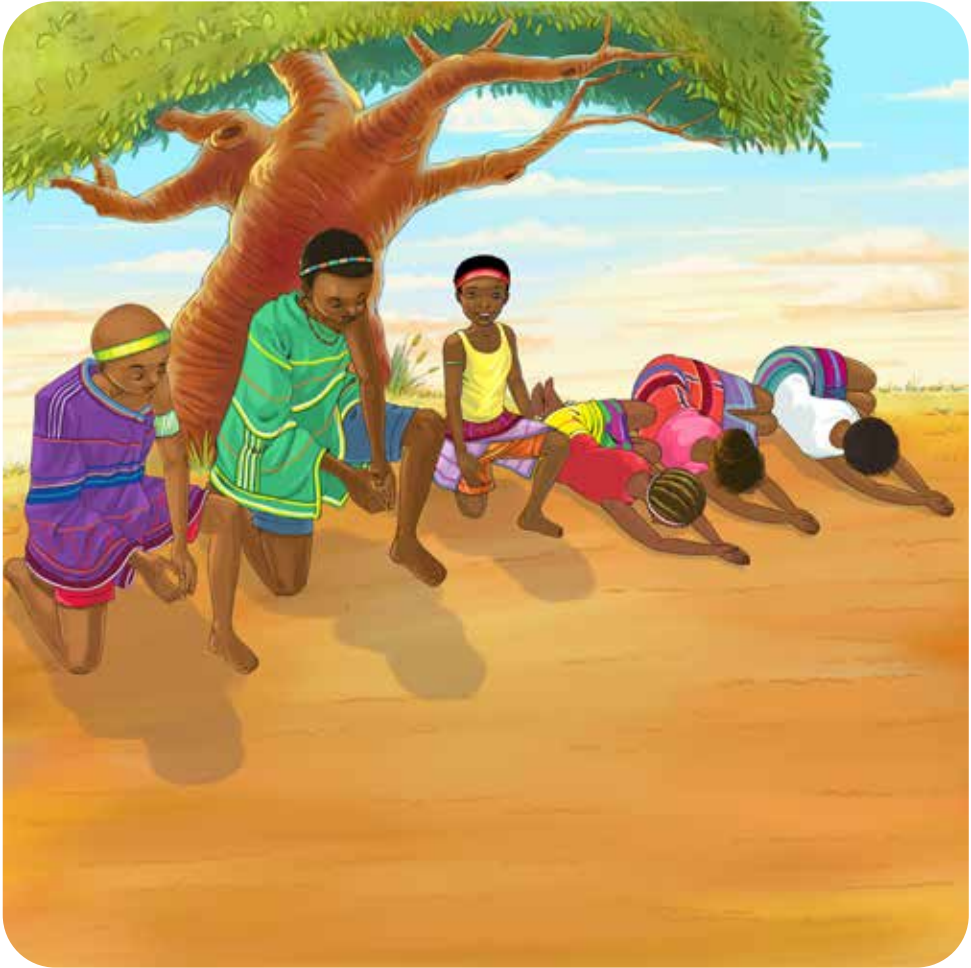
Vhatukana na vhasidzana vha na mutshino u fanaho une vha u tshina vhoṭhe. U pfhi tshifase.



Ri tshina ro ambara miṅwenda.

Muṅwe na muṅwe o ri takalela musi ri tshi tshina tshifase!

Vhavaṅḁa ndi vhathu vha mikhwa vhane maitete avho a tamisa vhukuma.



Ri a ḁihudza nga u vha Vhavaṅḁa!



Luĵa 1-2

- Donngi ya Khuliso
- Nunu na Bobi
- Liŋowa!
- Muma, aĵama, pfhala!
- Zwivhuya u funa u kunakisa!
- Ngele na Ngudo vha a thusa
- A hu na maĵi
- Tshi a kona u fhufha?
- Mulilo!
- Mavhudzi mahulu
- Űali na buvhi
- Muoli Marubini!
- Thuso o mangala!
- Baba vha ġo vhuya lini?
- Phumu o takalaho!
- Mvulatshikolela!
- Thendo na Thiambi
- Kha ri vhulunge maĵi
- Űhama o farakanea!
- Vha bulasini
- Ivhani na vhulenda, Thabelo
- Swobo ya u ġifhelela
- Vhasidzana na mbudzi

Luĵa 3

- Badzhi yo shandukisiwaho
- Dzikhonani kha mitsho yoŰhe!
- A thi funi miroho!
- Mulimi Vho Vele na dzixhoho
- Tshilidzi o huvhala
- Maĵi! Maĵi!
- Lufuno lwa malwelavanda
- Zwienda zwiswa zwa Pfhano
- Mathaithai a Lwalwa
- Riphuluse o fara mbava!
- Muĵa u Űhogomelaho
- Musengavhadzimu wa Farisani
- MutevheŰhagu wa vhutshilo ha tshigula
- Vhulwadze ha dzinguluvhe
- U thetshela zwixiwa zwa Tshivenġa
- Makumba o nyamalalaho a Vuvu
- Luĵamo lwa Űwasundani lwo bveledzea
- Aġivhaho na Aġaho
- Moli na zwithuthubi
- Tshibeġani tsha Kulani
- Maitele a Vhavenġa
- Mukapu wa u ġifha
- Mushonga wa u fhodza
- Űotshi
- Vhuĵolo ha dzimbeu
- Muhumbulo wavhuġi wa Tseisano
- Bola yo xelaho
- Wanga u ġivha tshifhinga
- Ni Űavhanyela mini, Wandeme?
- Ngweġa i sa londi
- Muĵambi makone
- Zwifhiwa

Luĵa 4-5

- Rinngi ya musuku
- Lwendo lwa u ya vhugalaphukha
- Muvhuya u londola mutakalo zwavhuġi!
- Mulimisi o fariwa nga mala
- Soweto
- Tshaka dza zwiendedzi
- Mathoma maswa
- Ndifhedzo ya bulu
- Musidzana wa vhuĵali
- Zwo hulesa kha nġe!
- Vhatukana vha vhuĵali
- Vhulwadze ha mukhushwane
- Murei wa khovhe
- Thaidzo ngadeni ya makhulu
- Vhusiku vhu si na khofhe
- ŰhangaŰhanganyo tshi sa ofhiho!
- Tshienda tshavhuġi
- Muĵoro wa Sedzani

ZENEX
FOUNDATION

MOLTENO
INSTITUTE FOR LANGUAGE AND LITERACY
EST. 1974



Ulwazi Lwethu yo lambedziwa nga Zenex Foundation nahone ndi thandela yo thomiwaho u itela u bveledza tshivhalo tsha bugu dza murole wa fhasi na vhavhali vha vhalelaho u dhiphina vha nyambo dza Afrika na matheriala wa u tikedza vhadededzi. Iyi thandela yo livhiswa kha u funza na u tikedza vhagudiswa vha re kha Mutheo wa Fhasi u itela u khwinifhadza kuvhalele na kupfhesesele kwa luambo lwavho lwa hayani. Bugu dzo bveledzwa nga nyambo dza tshane dza Afrika nga u shumisana ha Molteno Institute for Language and Literacies, Nelson Mandela Institute for Education and Rural Development, Room to Read South Africa, na Saide. Zwishumiswa zwothe zwo bveledzwa sa “Zwishumiswa zwa Pfunzo zwo Vulelwaho” kana “Open Education Resources” (OER).

Please visit our website to download the full copy of this reader:
ulwazilwethu.org.za



Creative Commons Attribution-NonCommercial-NoDerivatives (CC BY-NC-ND) 4.0 International Licence

Disclaimer: You are free to download and share this work as long as you attribute Zenex Foundation, but you may not change this work in any way or use it commercially.

