



Chuchekani na pume



Zandile Malaza





Mixo wun'wana, Chuchekani u vona pume lerikulu.

Pume ri le efasitereni.

Pume ri le ekamareni!



Chuchekani u lava ku rila.

Pume i ri kulu naswona ra chavisa!

Chuchekani wa switiva leswaku pume ra luma, naswona wa ri chava.





Chuchekani u vona milenge ya nhungu ya pume. U vona mahlo ya nhungu ya pume.

Milenge na mahlo hi leswi chavisaka!

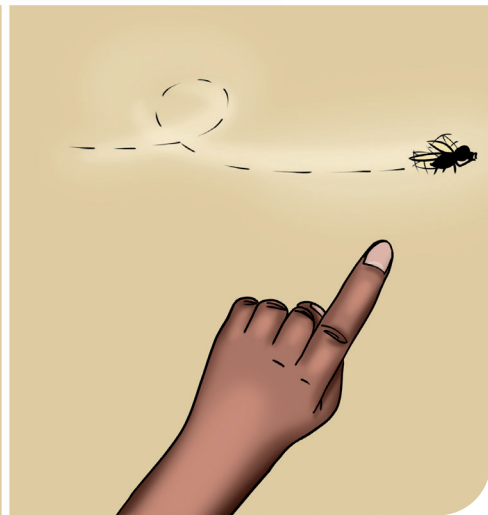
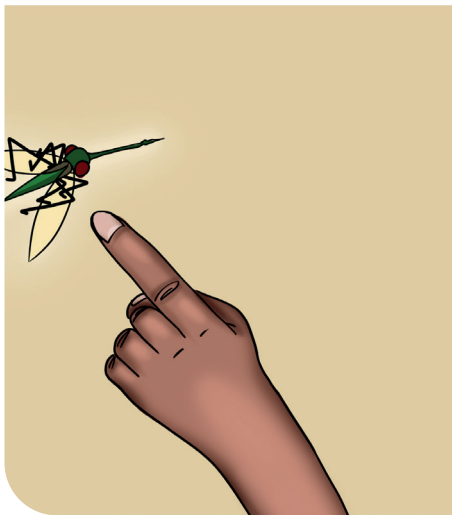
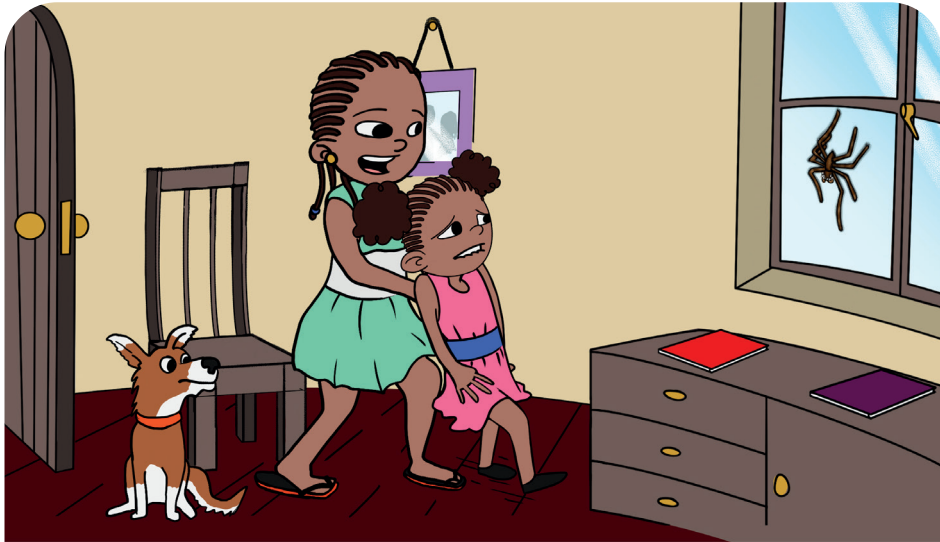
Pume lerikulu ri fanele ku famba!



Chuchekani u vitana mana wa yena.

Manana a nga ri chavi pume lerikulu. U chavelela Chuchekani.





Manana u ri, “Pume ri nge ku vavisi,
Chuchekani. Mapume ya hi pfuna swinene.
Ya dya tinhongana na tinsuna leti ti nga hi
vavisaka.”



Manana u susa pume lerikulu.

Chuchekani a languta a chuhile.

Ekusihleleleni, pume ri kasa ri huma hi fasitere.

“U nhenha ya mina, Manana!” ku vula Chuchekani.





Kutani Chuchekani u vona nhongana. U vona na nsuna. Yi lava ku n'wi luma nhompfu!

Sweswi Chuchekani u navela onge pume ri nga vuya!